

# SILO-BUSTING

for BETTER HEALTH

Hospitals and health systems today generate massive amounts of patient-related data from a variety of sources. This information holds the power to change care as we know it.

**1.2 billion**

CLINICAL DOCUMENTS ARE PRODUCED EACH YEAR<sup>1</sup>

**38.1 million**

MRIS PERFORMED IN THE U.S. IN 2016<sup>2</sup>

**79.2 million**

CT SCANS PERFORMED PER YEAR IN THE U.S.<sup>3</sup>

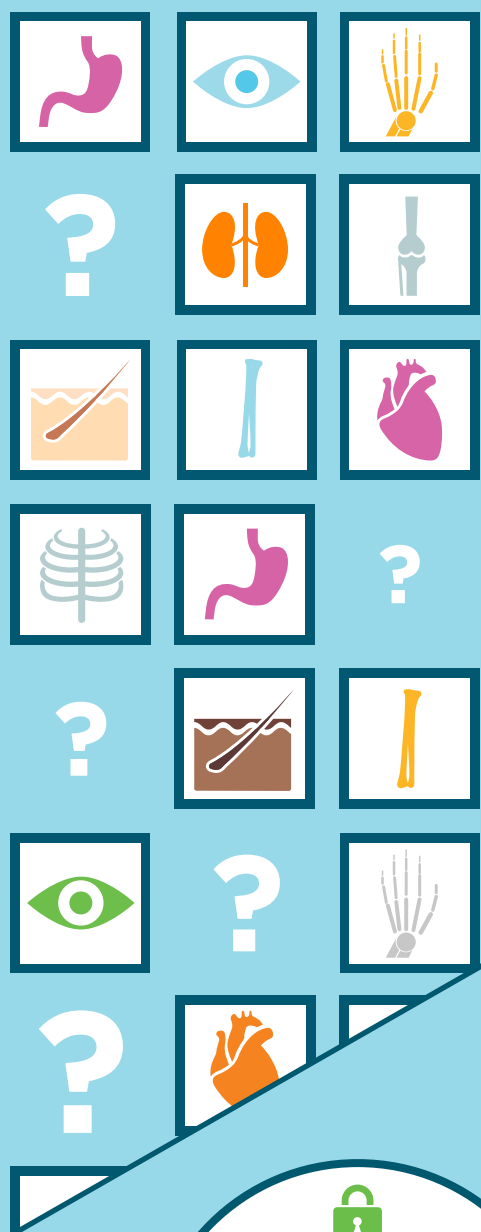
HEALTHCARE DATA WILL REACH

**15 zetabytes** BY 2020 —

EQUIVALENT TO FOUR TIMES THE AMOUNT OF INFORMATION CONTAINED ON THE INTERNET<sup>3</sup>

## AN INCOMPLETE PICTURE OF PATIENT HEALTH

Managing this information is challenging for several reasons.



### Missing images

Traditional PACS approaches don't easily extend images to point-of-care clinicians and don't typically manage non-DICOM medical image formats (e.g. JPEG, MPEG, PDF, etc.) that offer significant clinical value. This information remains locked in silos, largely inaccessible to the enterprise.

**75%**

of medical imaging assets non-DICOM<sup>4</sup>

### Lack of interoperability

According to a recent survey of healthcare CIOs and senior IT leaders<sup>5</sup>:

**46%**

feel the key barrier to enterprise imaging is a lack of EHR interoperability with imaging-related technology

**54%**

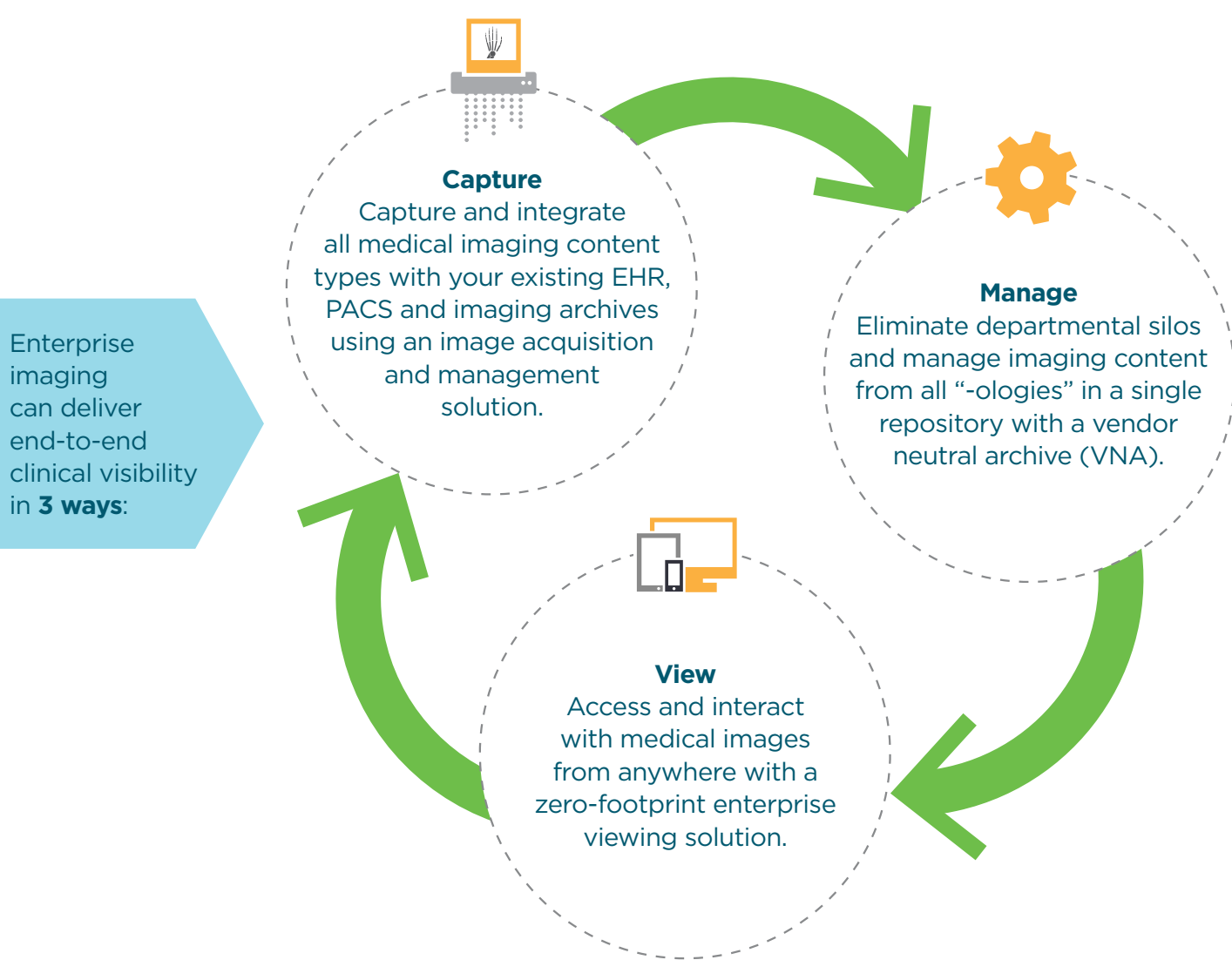
of organizations cannot exchange medical images with recipients outside their four walls

**50%**

cannot move imaging data between their systems and applications

## ENTERPRISE IMAGING: SEE WHAT YOU'VE BEEN MISSING

Access to all medical imaging content is critical to making informed clinical decisions.



## REALIZE VALUE WITH ENTERPRISE IMAGING



### Enhance patient outcomes

- Improve patient safety
- Streamline care coordination, collaboration
- Enable access to all patient medical images at the point of care
- Make more informed clinical decisions and optimize patient outcomes



### Lower costs

- Reduce redundant testing for value-based care
- Lower hospital readmissions
- Increase workflow efficiency
- No more costly PACS data migrations



### Ensure data security

- Establish centralized control of all imaging data
- Apply security protocols to all images
- Protect PHI from unwanted exposure

1. [http://www.himss.org/sites/himssorg/files/FileDownloads/HIMSS%20Health%20Story%20Project\\_FactSheet.pdf](http://www.himss.org/sites/himssorg/files/FileDownloads/HIMSS%20Health%20Story%20Project_FactSheet.pdf)  
 2. <https://jamanetwork.com/journals/jama/article-abstract/2674671?alert=article&alert=article&alert=article>  
 3. <http://www.healthcareitnews.com/news/storage-wars>  
 4. Medical Enterprise Data Storage - World - 2013, IHS Markit  
 5. <http://healthinteroperability.com/news/lack-of-ehr-interoperability-holding-back-enterprise-imaging>